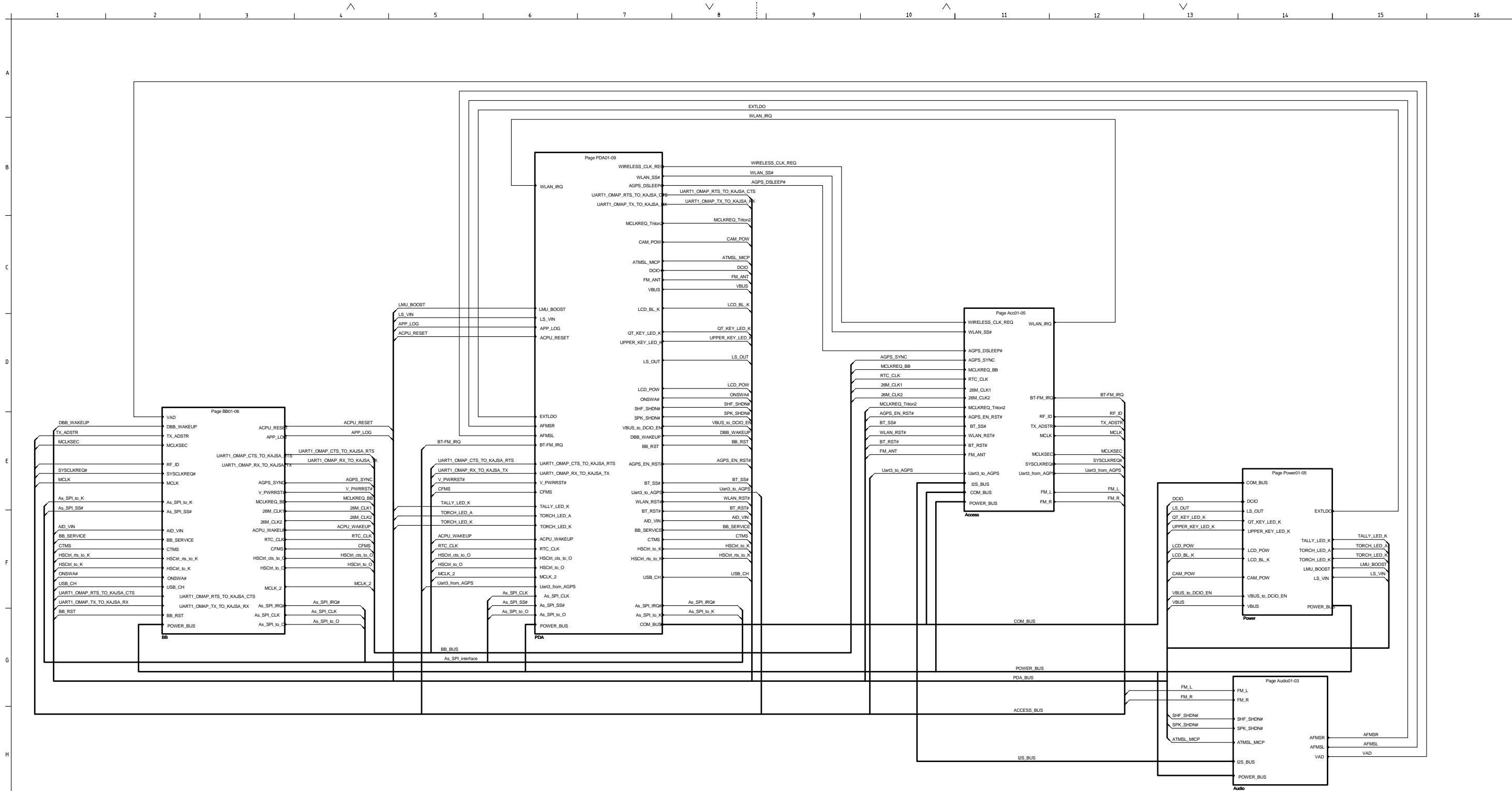


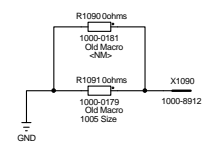
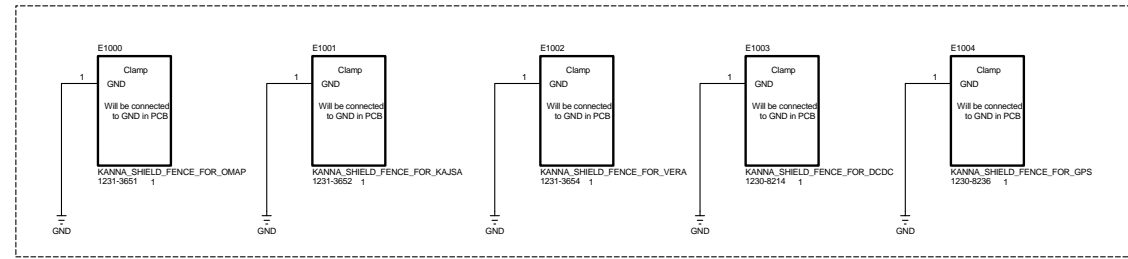


Schematics, Electrical

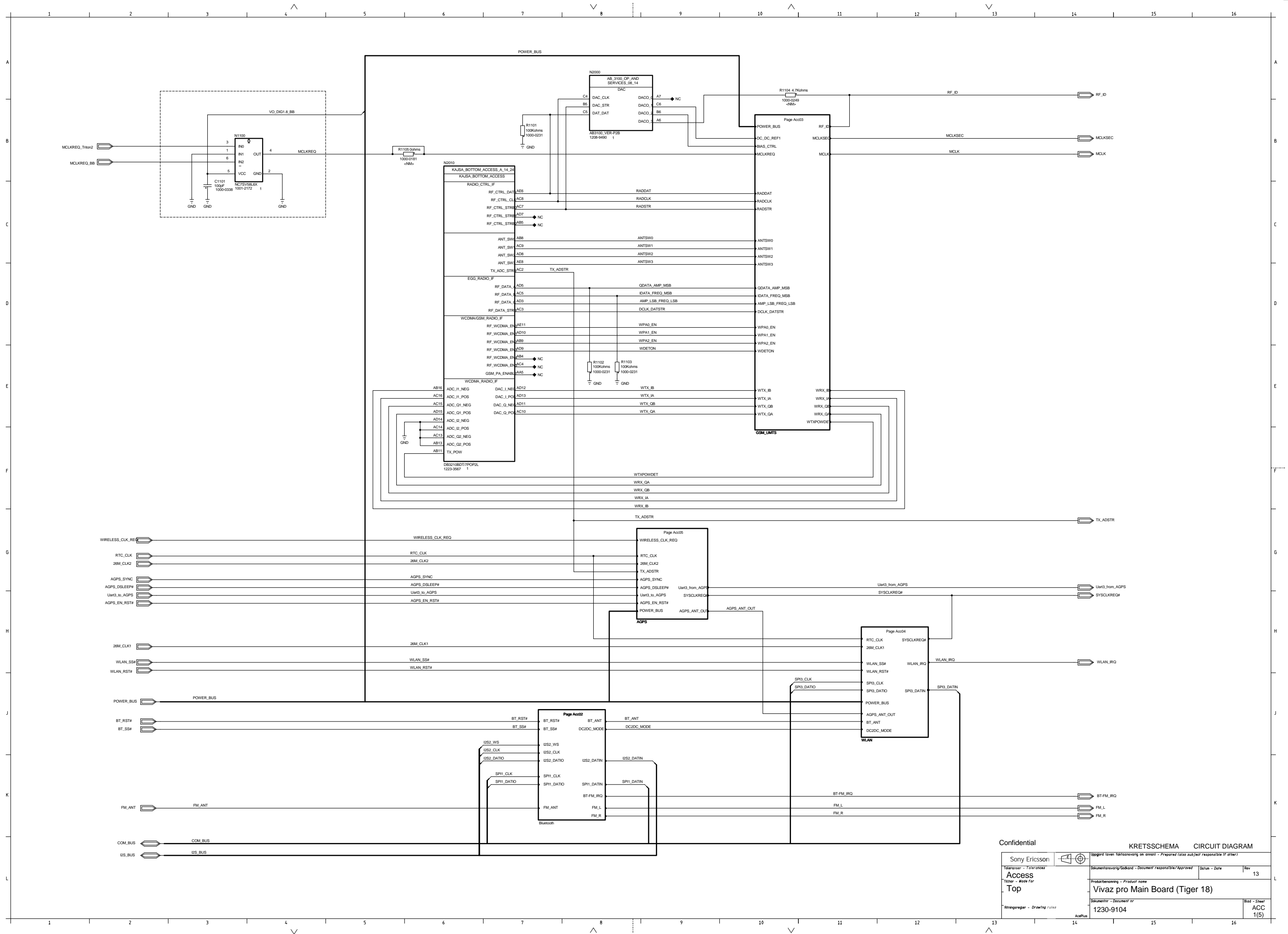
Applicable for Vivaz pro, U8i U8a

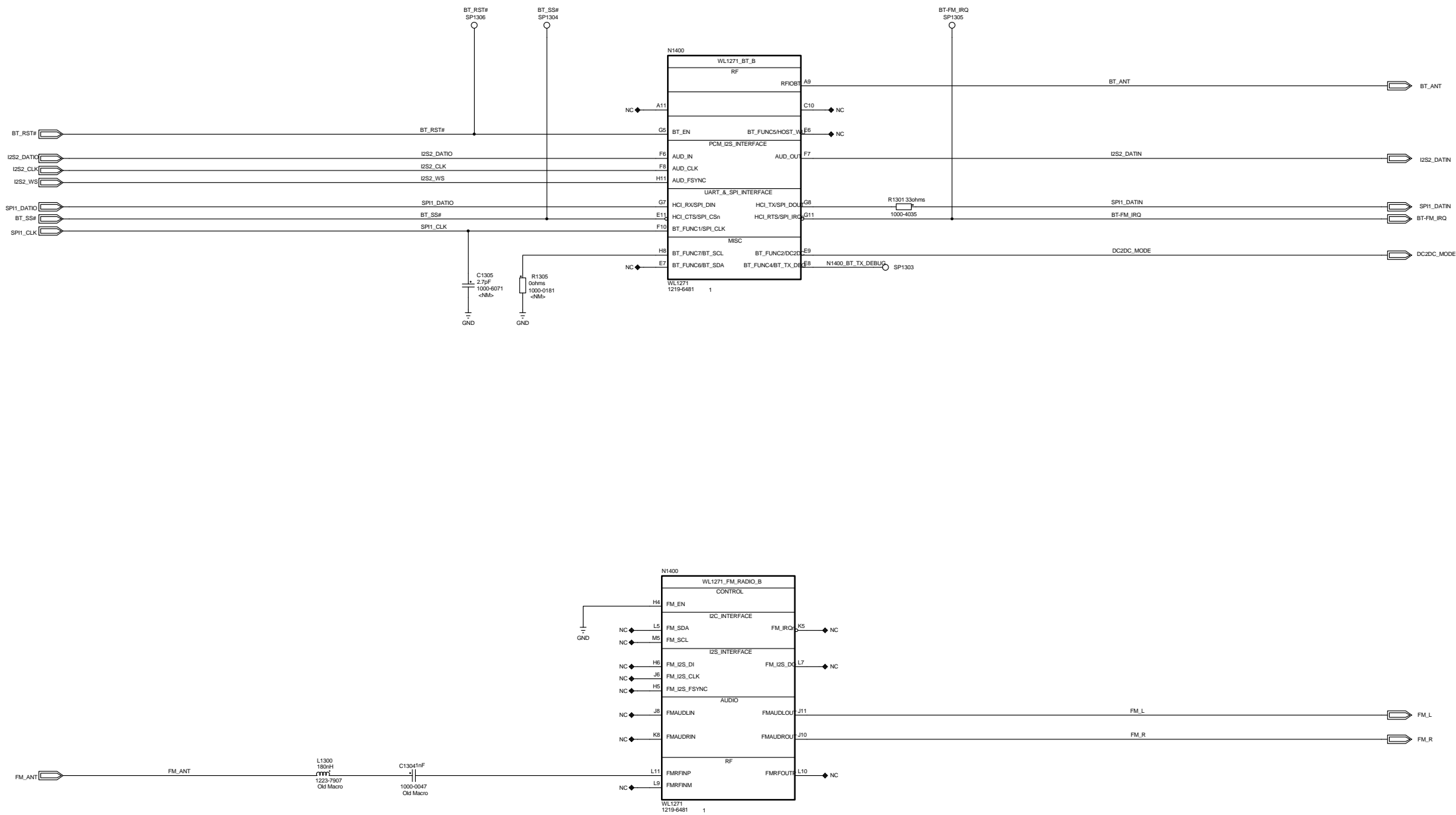


Shield fence



Access:			
GSM/UMTS:	1000 - 1299	Vera:	N2000
Bluetooth:	1300 - 1399	Kajsa:	N2010
WLAN:	1400 - 1499	OMAP:	N2500
GPS/DVBH	1500 - 1599	Gaia:	N2501
Reserved:	1600 - 1999		
Logic:			
Baseband:	2000 - 2499		
PDA:	2500 - 3099		
Reserved:	3100 - 3999		
Power:			
Power:	4000 - 4199		
Decoupling OMAP:	4600 - 4699		
Decoupling Kajsa:	4700 - 4999		
Reserved:			
Audio:			
Baseband:	5000 - 5499		
PDA:	5500 - 5999		

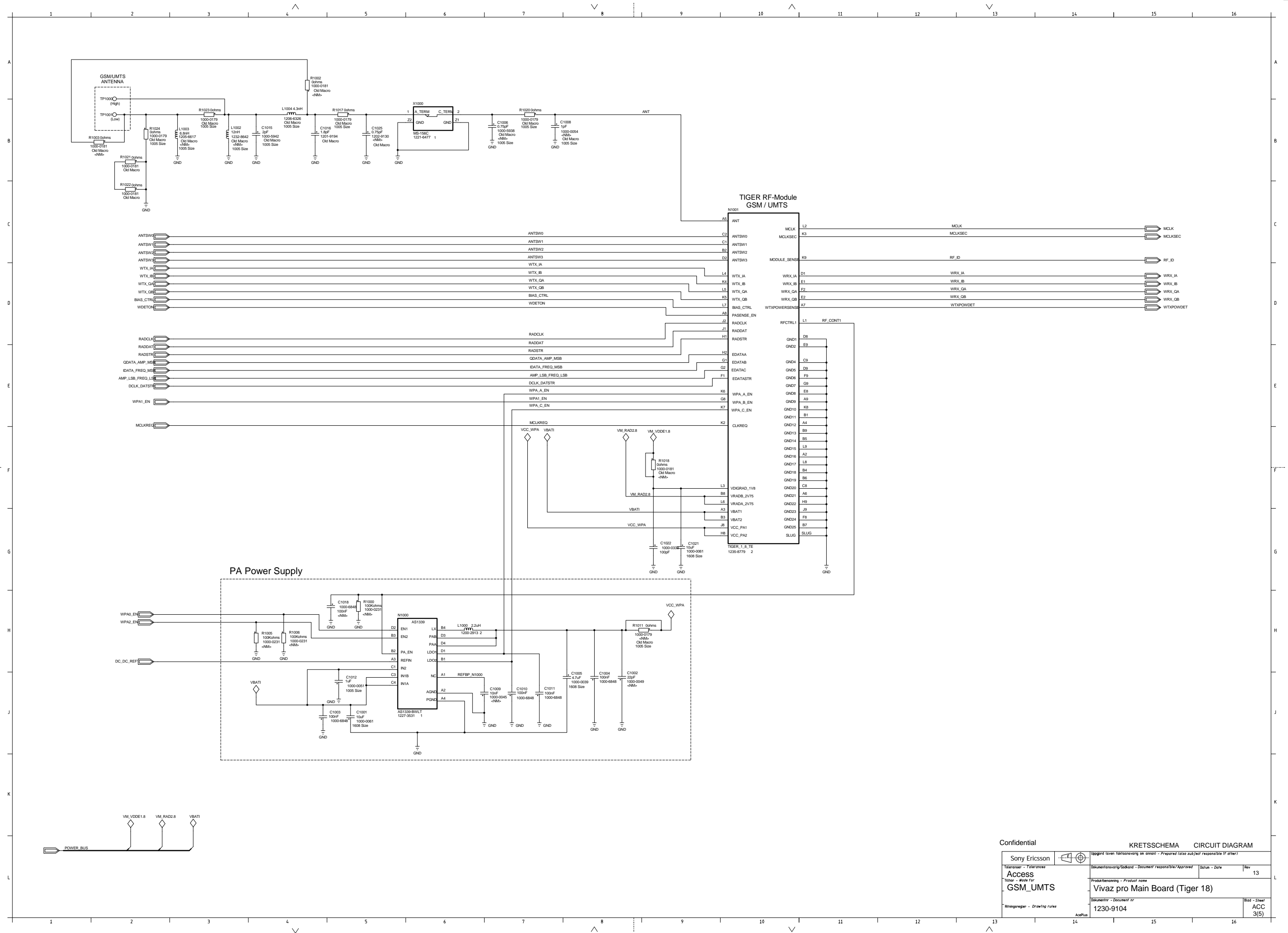


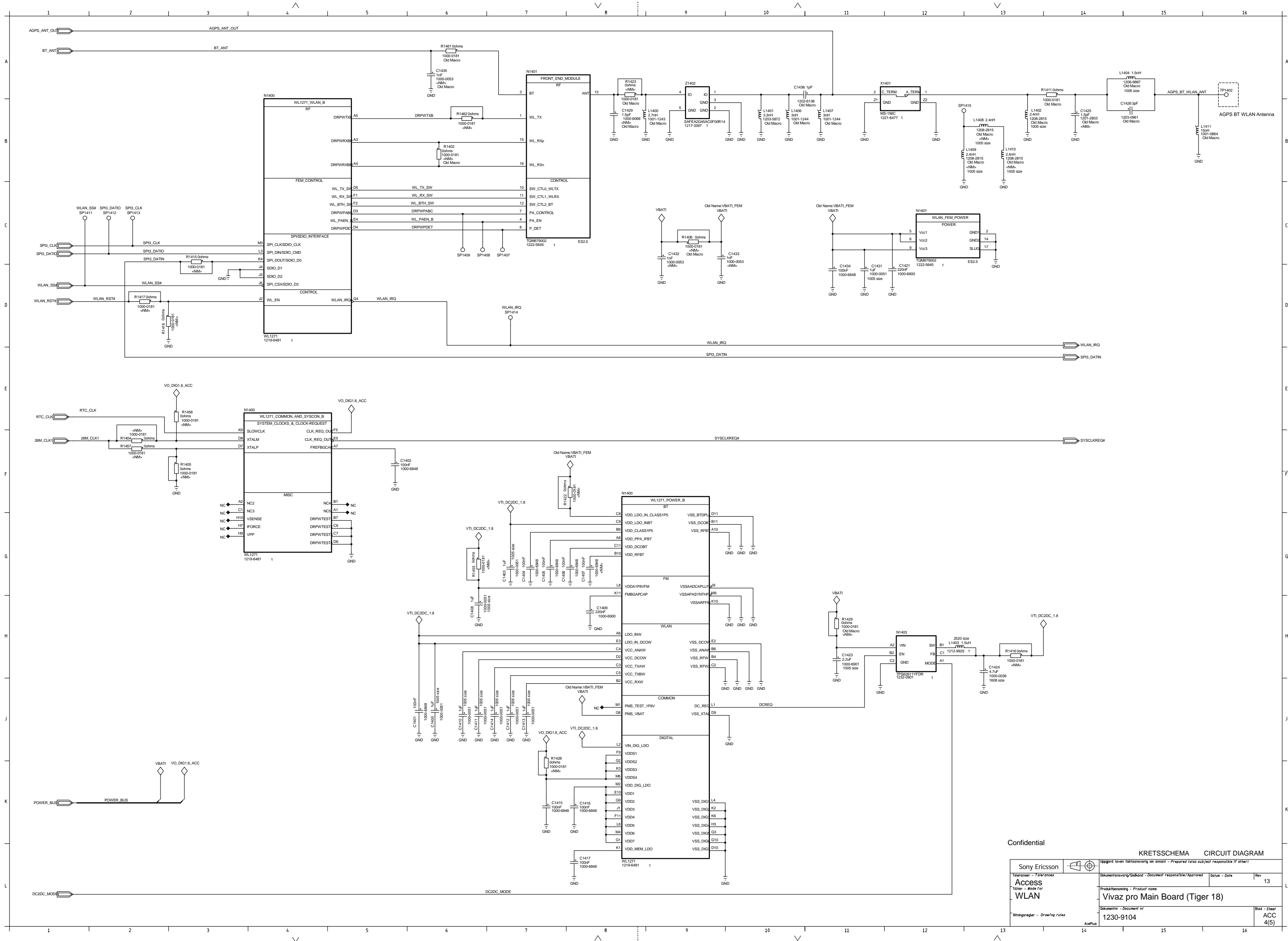


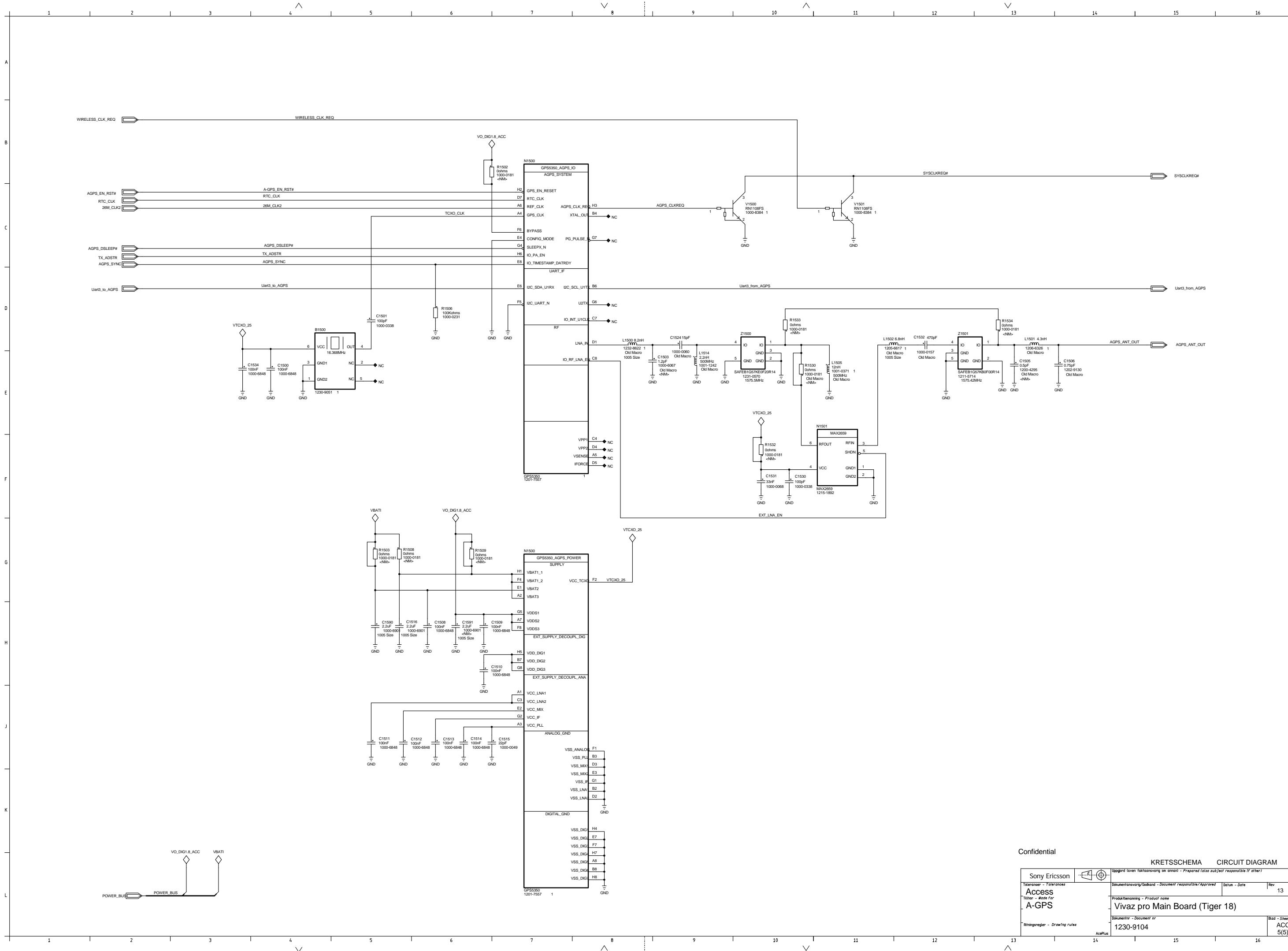
Confidential

KRETSSCHEMA CIRCUIT DIAGRAM

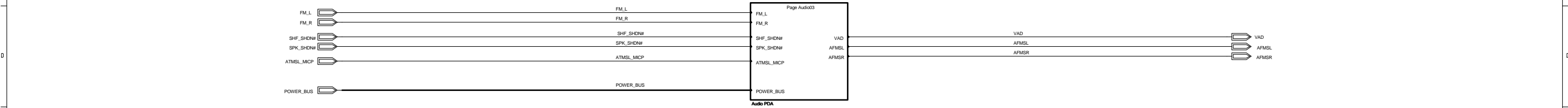
Sony Ericsson		Uppgård (avsnitt faktansvarig om annat) - Prepared (also subject responsible if other)	
Toleranser - Tolerances		Dokumentansvarig/Godkänd - Document responsible/Approved	Datum - Date
Access			Rev 13
Förhållande - Made for		Produktbenämning - Product name	
Bluetooth + FM radio		Vivaz pro Main Board (Tiger 18)	
Ritningsregler - Drawing rules		Dokumentnr - Document nr	Blad - Sheet
		1230-9104	ACC 2(5)





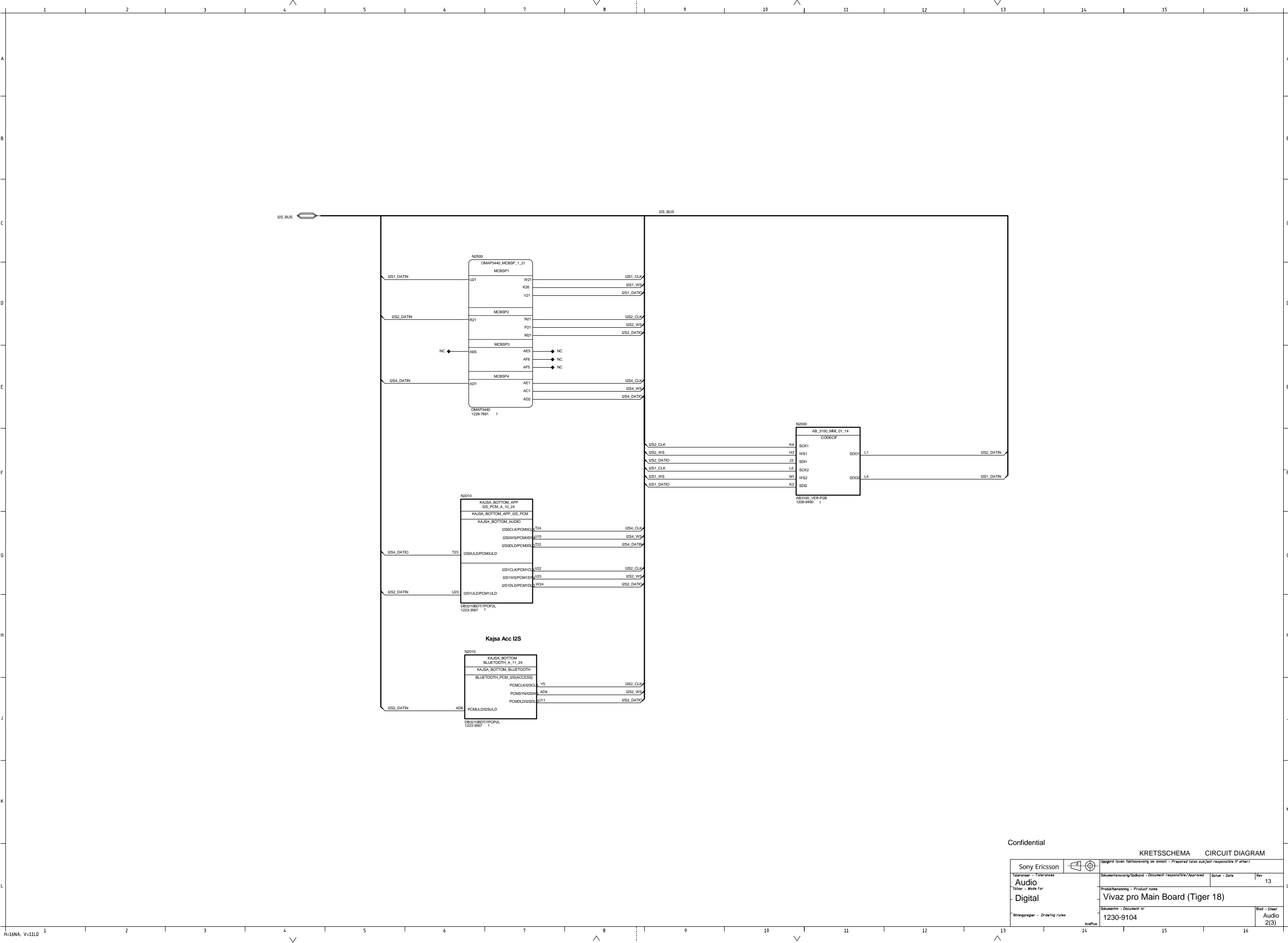


LZF 030 101/F PB1



Confidential		KRETSSCHEMA		CIRCUIT DIAGRAM	
Sony Ericsson		Uppgord (avsnittsansvarig om annat) - Prepared (also subject responsible if other)			
Toleranser - Tolerances		Dokumentansvarig/Godkand - Document responsible/Approved		Datum - Date	Rev
Audio					13
Titel - Made for		Produktbenamning - Product name			
Top		Vivaz pro Main Board (Tiger 18)			
Ritningsregler - Drawing rules		Dokumentnr - Document nr			Blad - Sheet
		1230-9104			Audio 1(3)

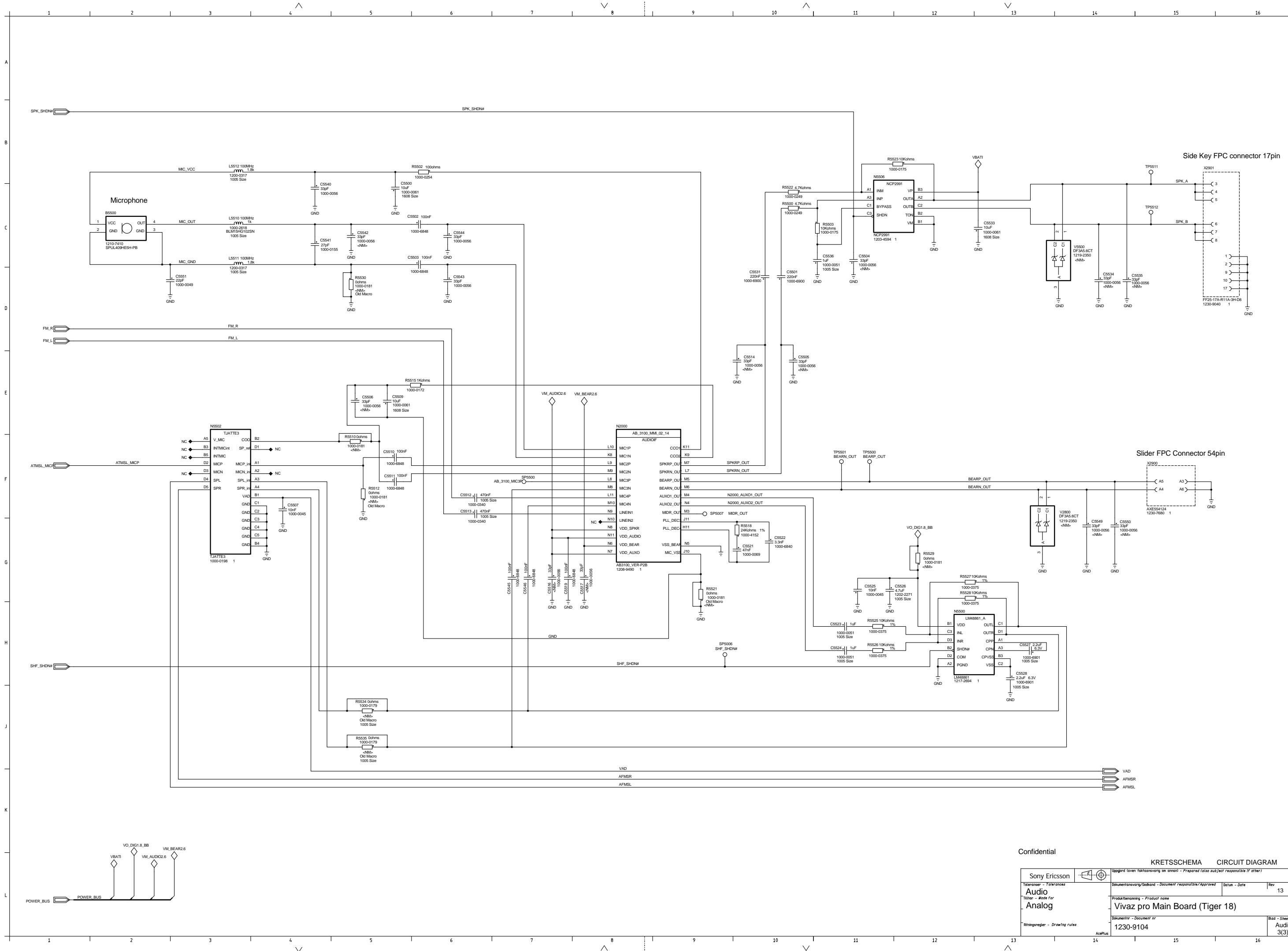
LZF 030 101/F RB1

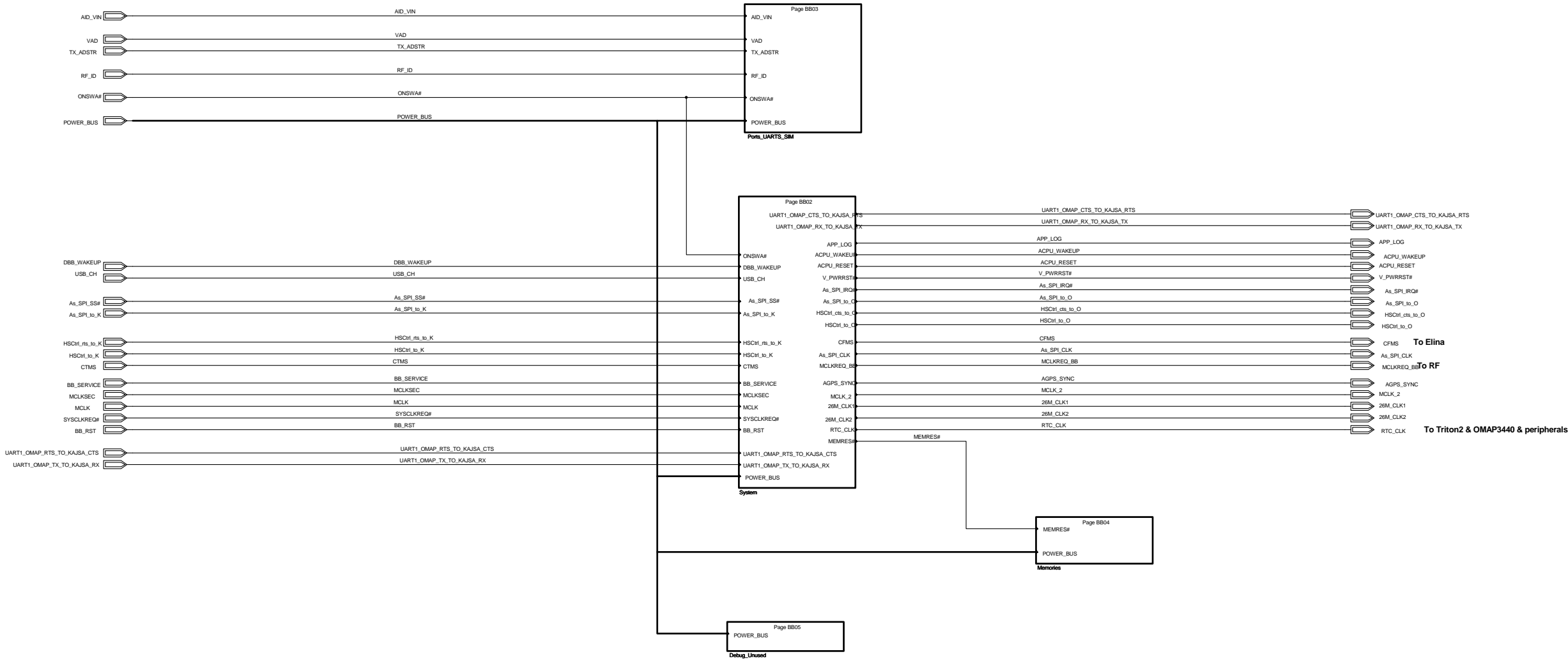


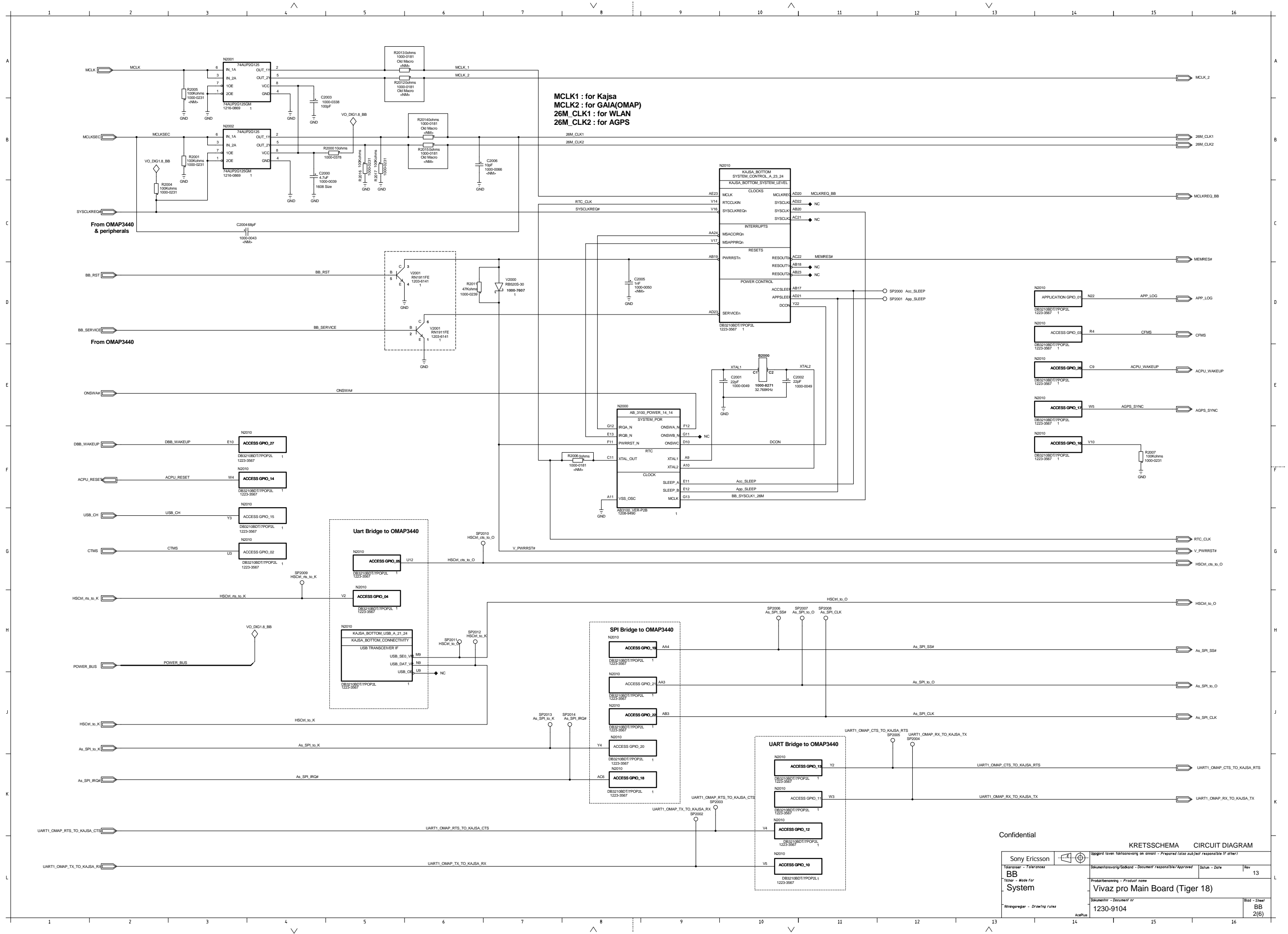
Confidential

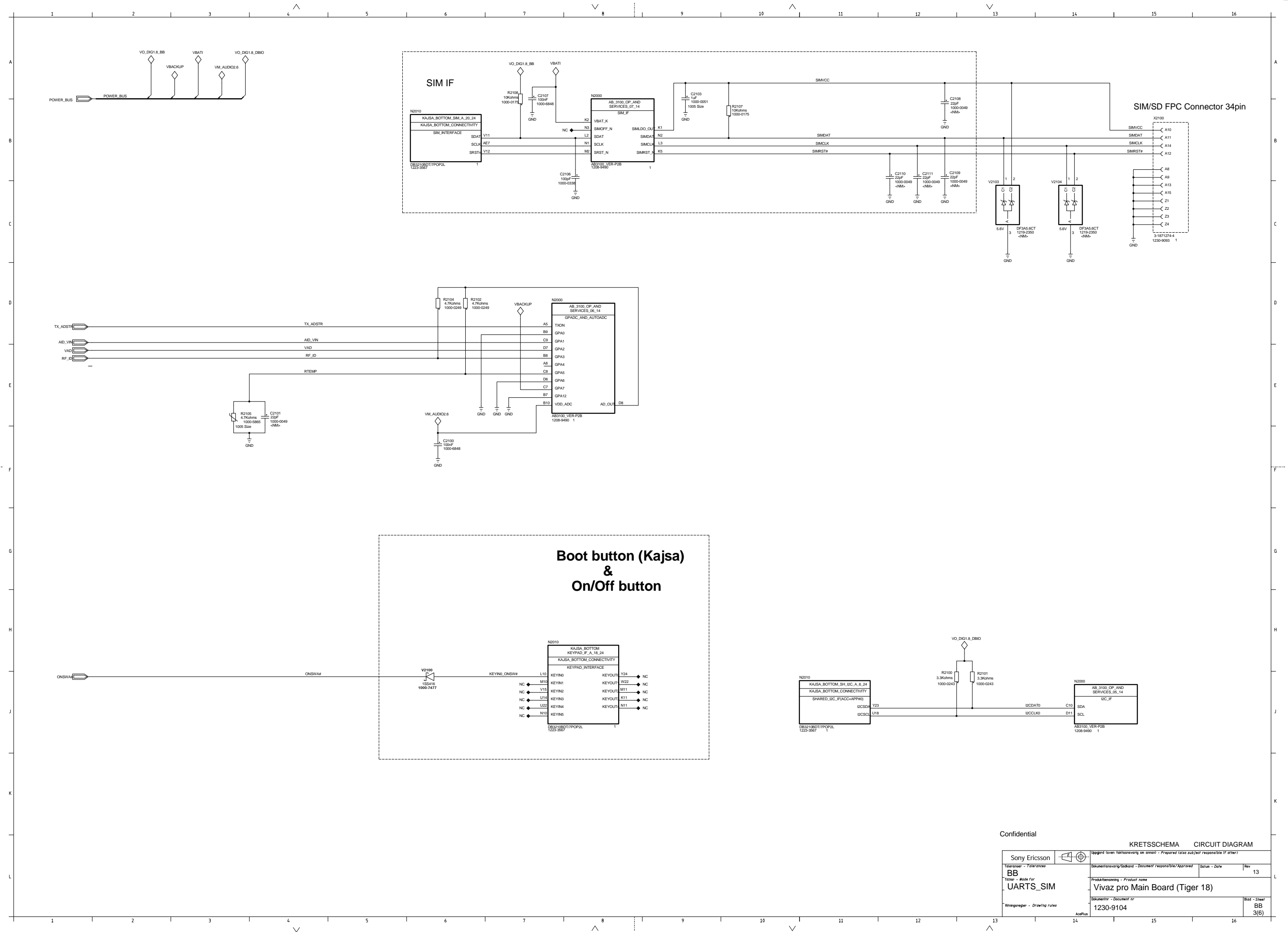
KRETSSCHEMA CIRCUIT DIAGRAM

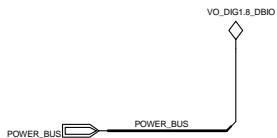
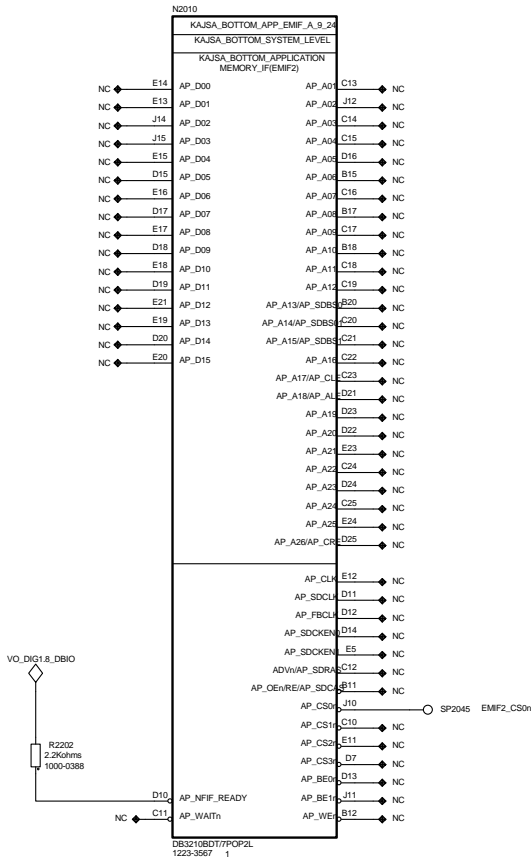
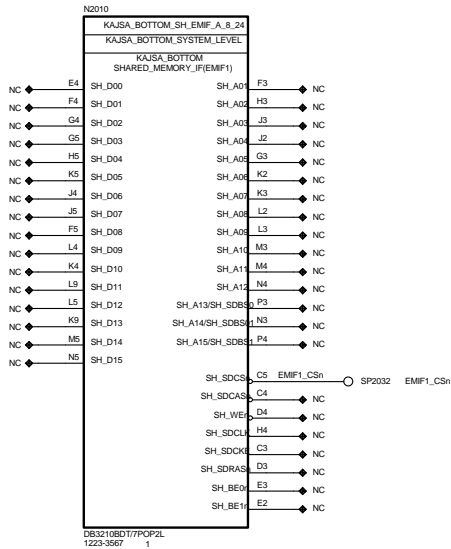
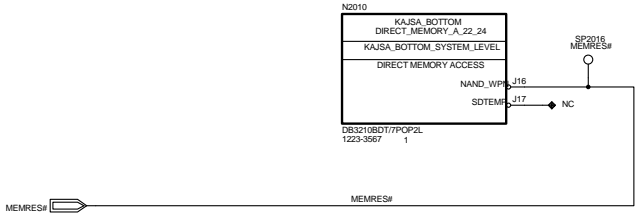
Sony Ericsson		Uppgård (avsnitt faktansvarig om annat) - Prepared (also subject responsible if other)	
Toleranser - Tolerances		Dokumentansvarig/Godkänd - Document responsible/Approved	Datum - Date
Audio			Rev 13
Författare - Made for		Produktbenämning - Product name	
Digital		Vivaz pro Main Board (Tiger 18)	
Ritningsregler - Drawing rules		Dokumentnr - Document nr	
		1230-9104	
		Blad - Sheet	
		Audio 2(3)	







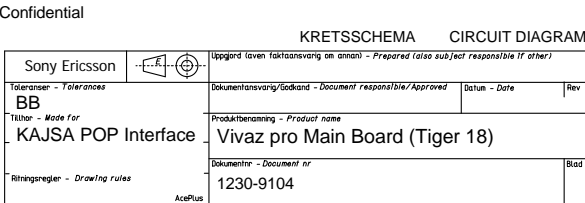


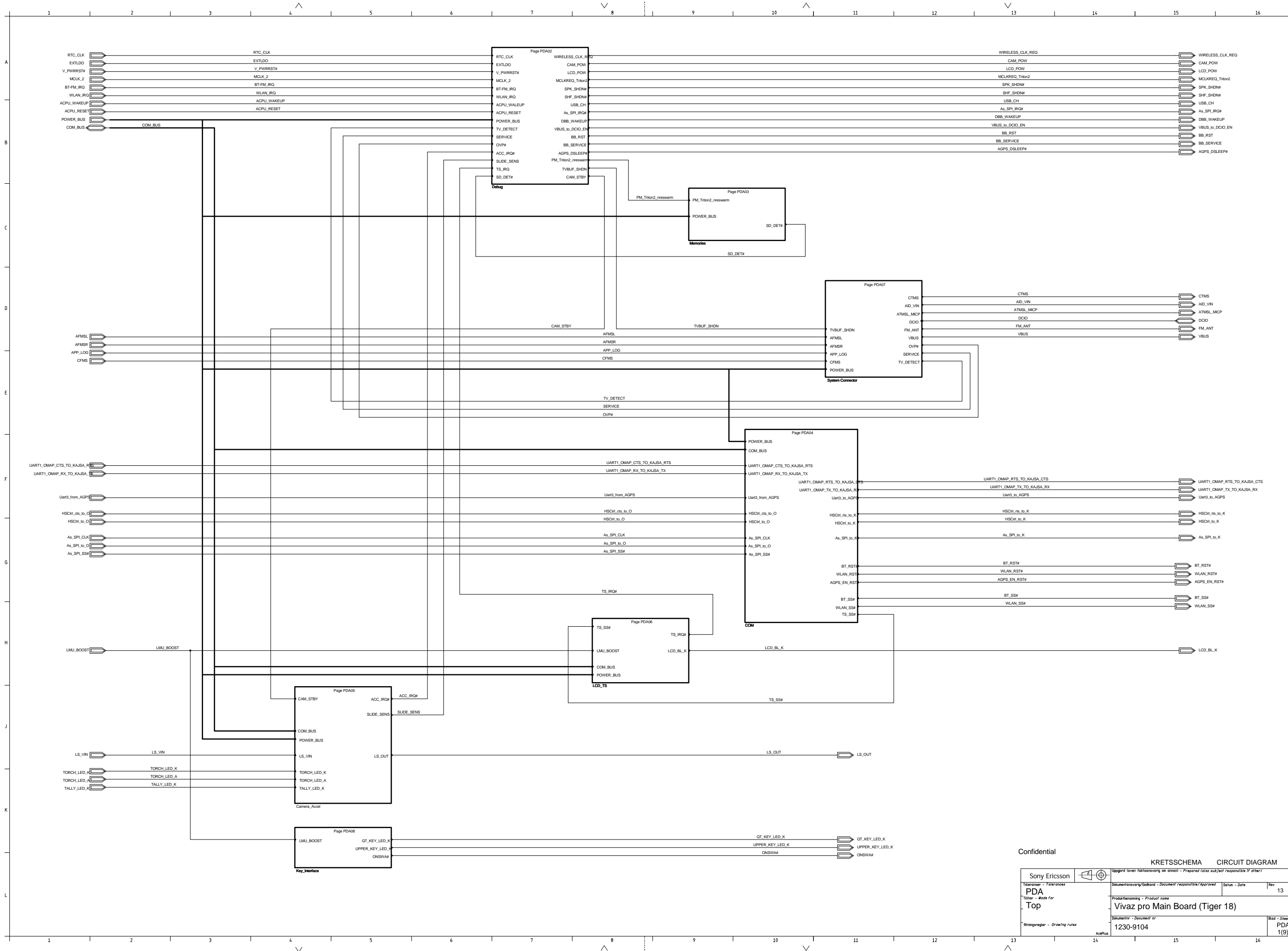


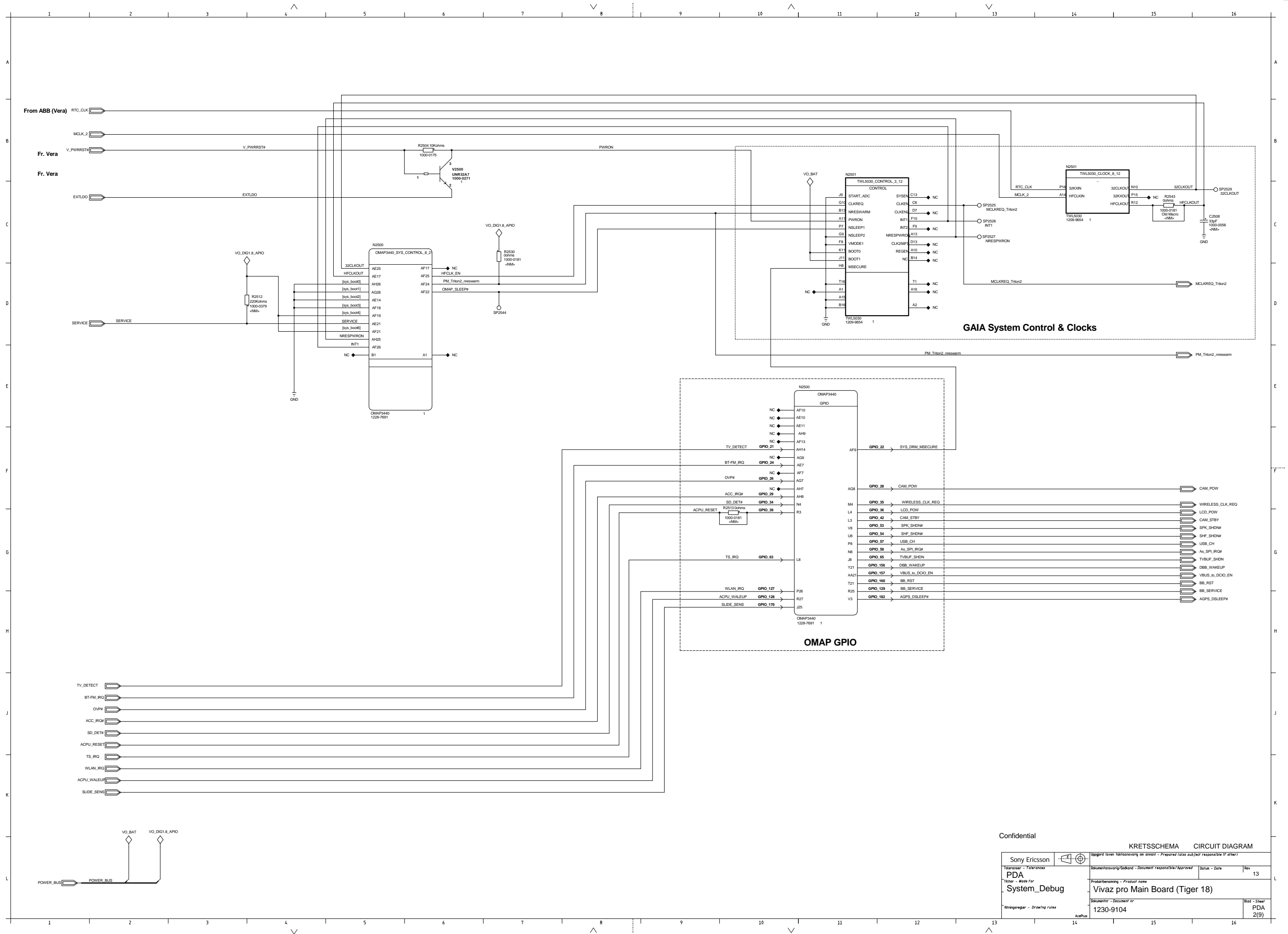
Confidential

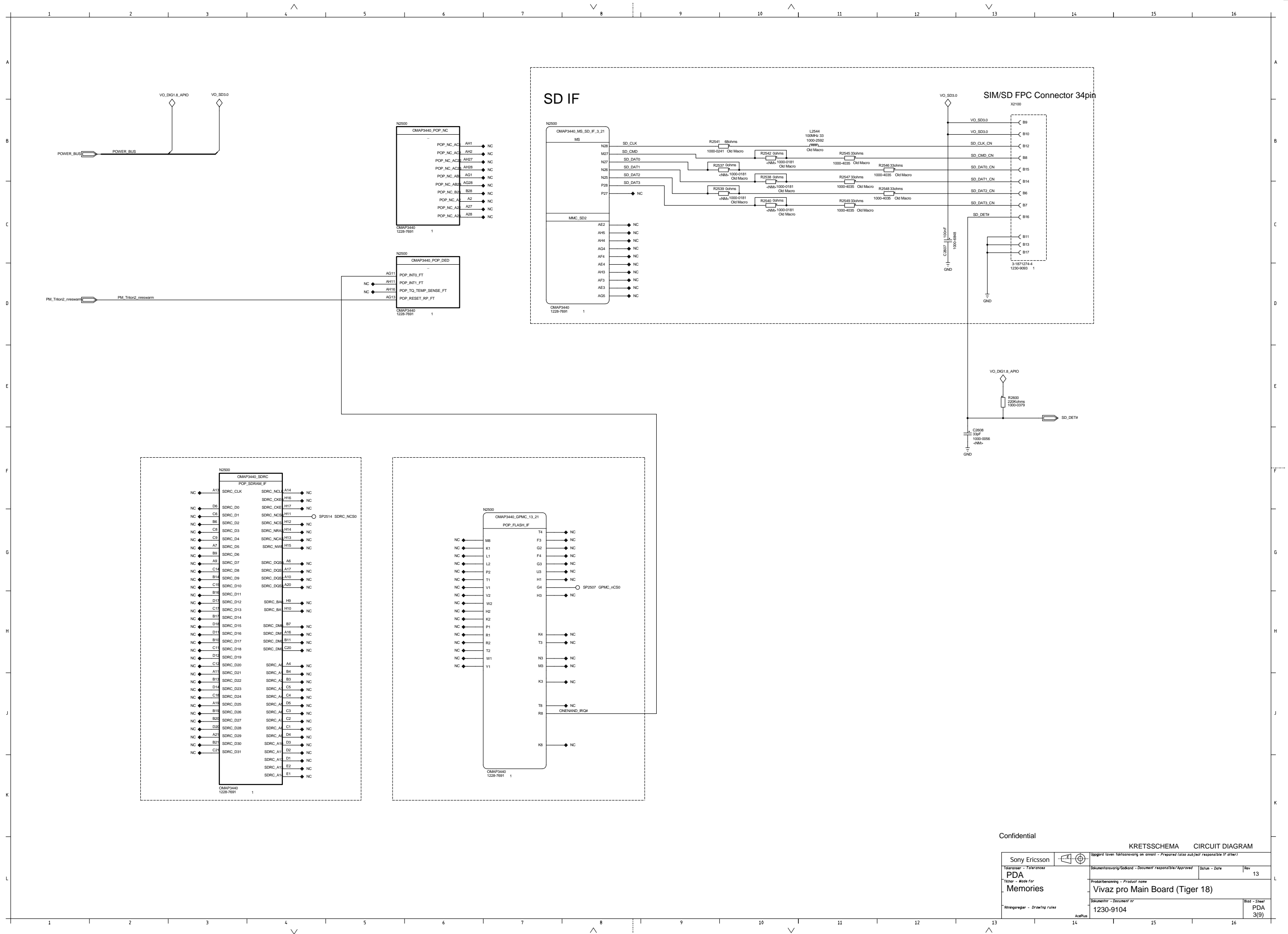
KRETSSCHEMA CIRCUIT DIAGRAM

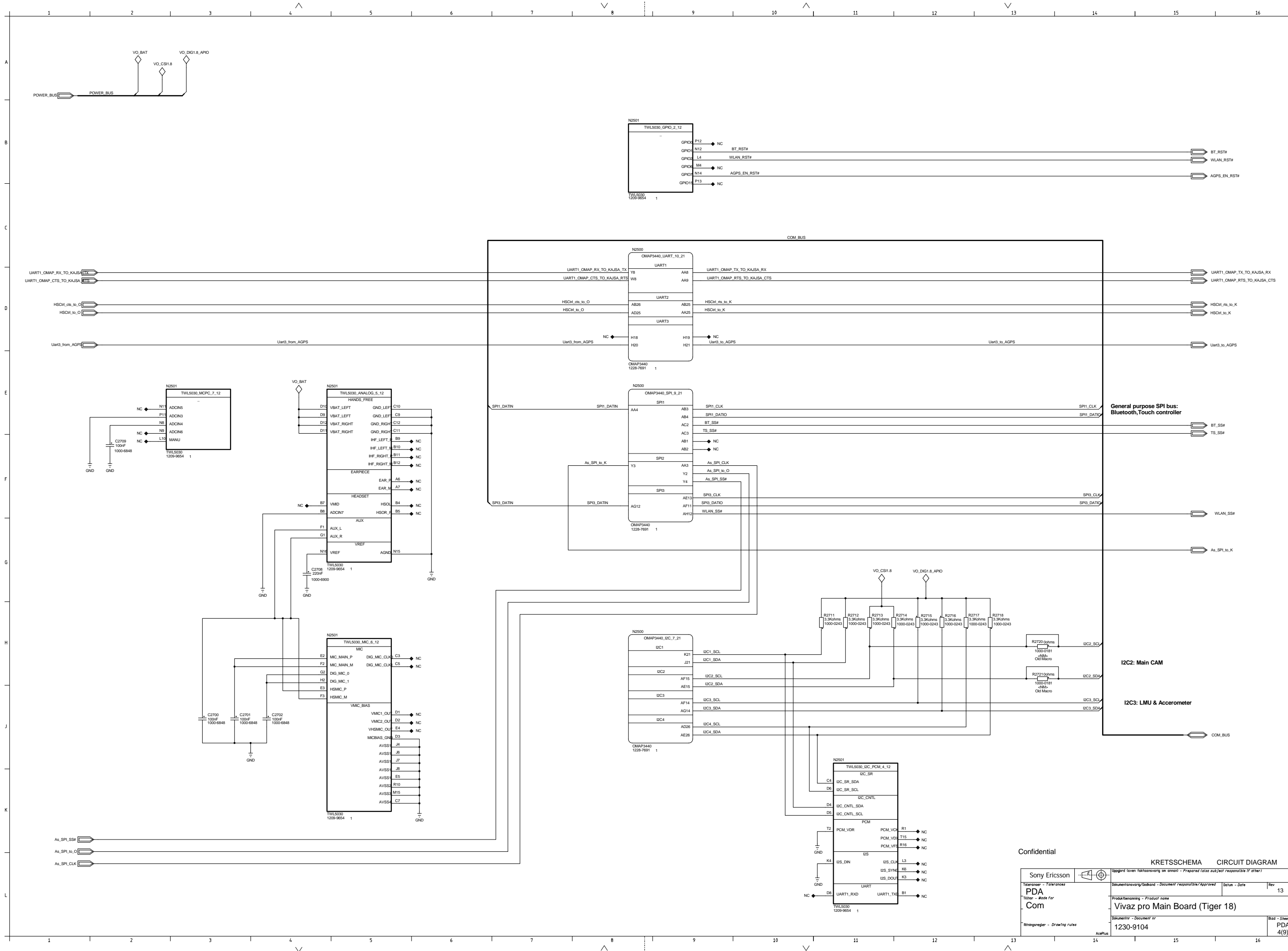
Sony Ericsson		Uppgård (avsnittsansvarig om annat) - Prepared (also subject responsible if other)	
Toleranser - Tolerances		Dokumentansvarig/Godkänd - Document responsible/Approved	Datum - Date
BB		2010/03/29	Rev 13
Titel - Made for		Produktbenämning - Product name	
Memories		Vivaz pro Main Board (Tiger 18)	
Ritningsregler - Drawing rules		Blad - Sheet	
		BB 4(6)	

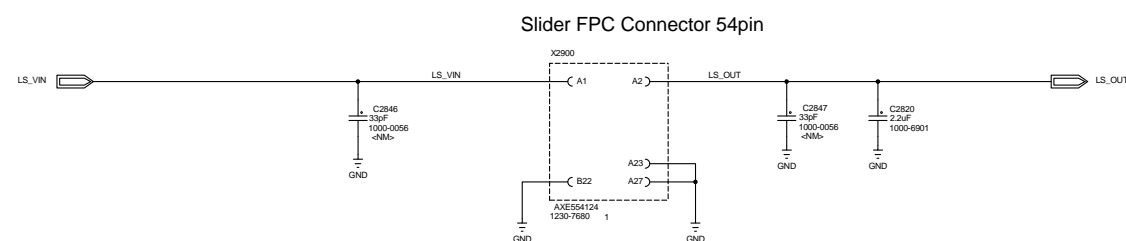
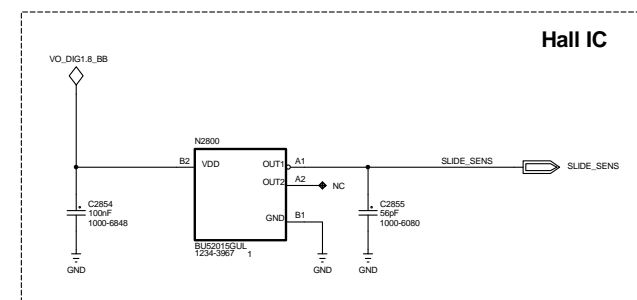
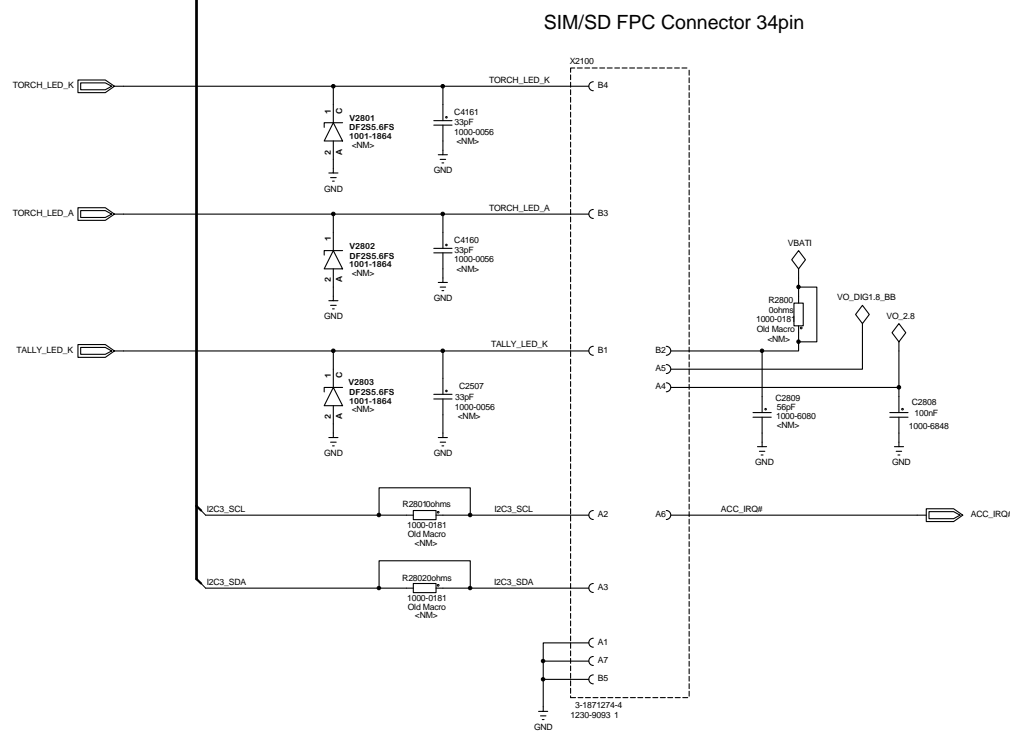
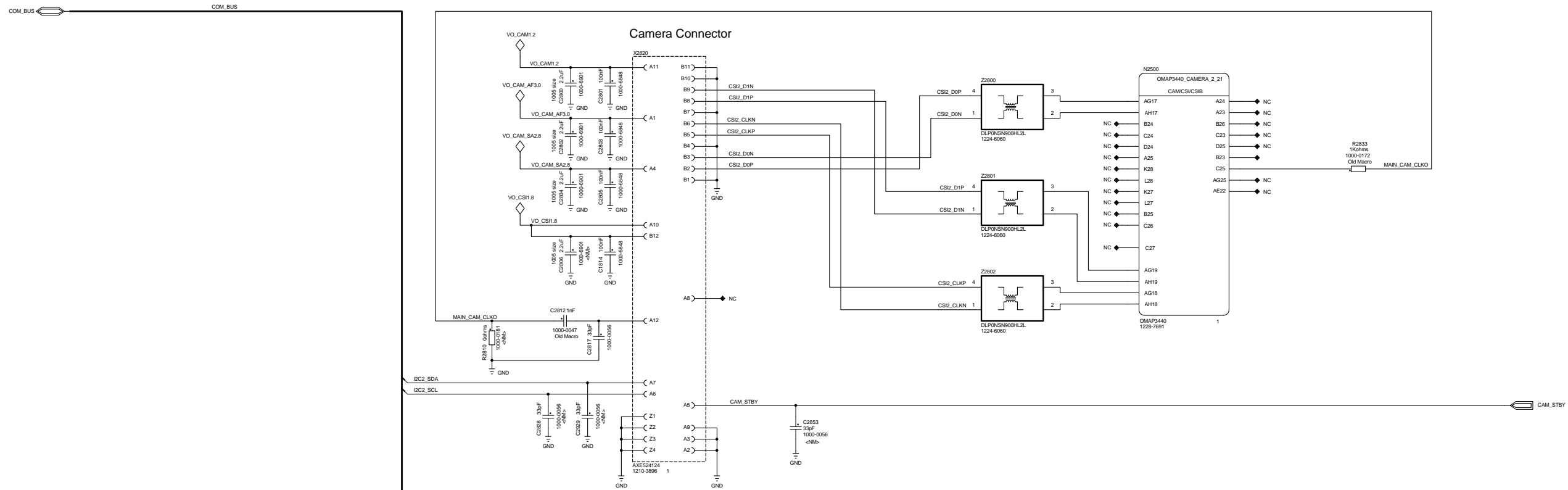








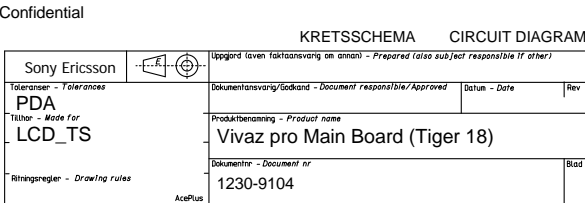


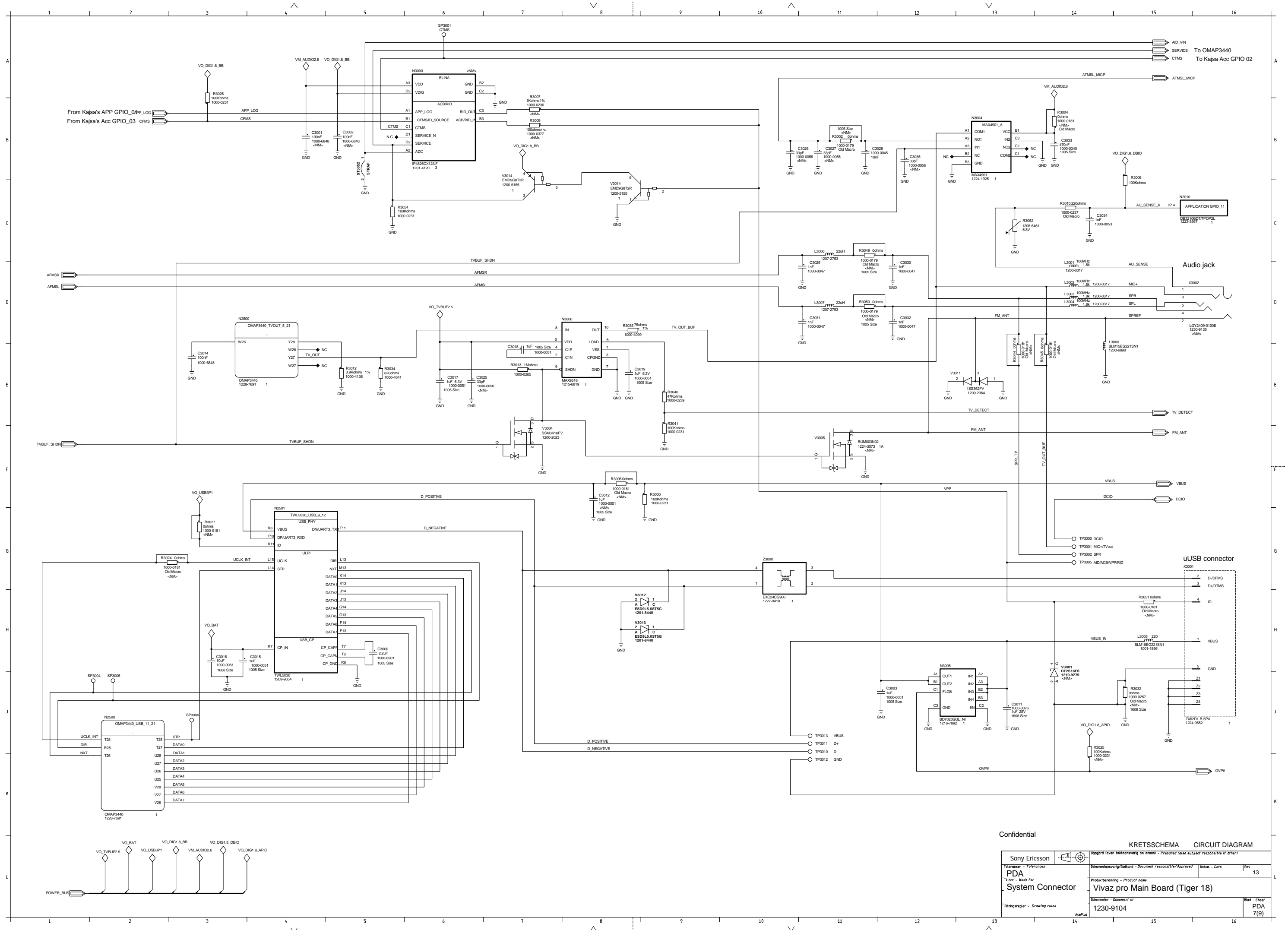


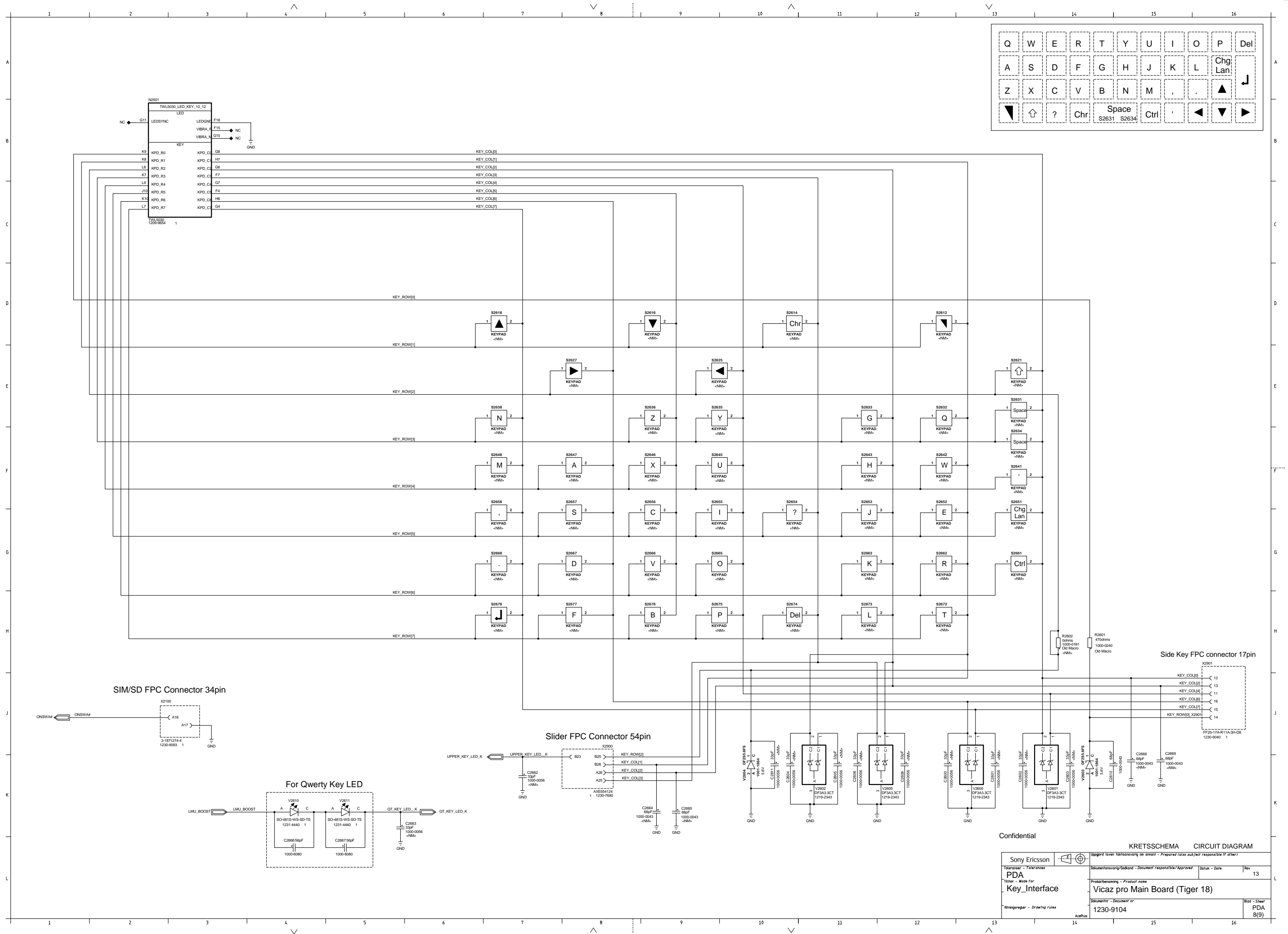
Confidential

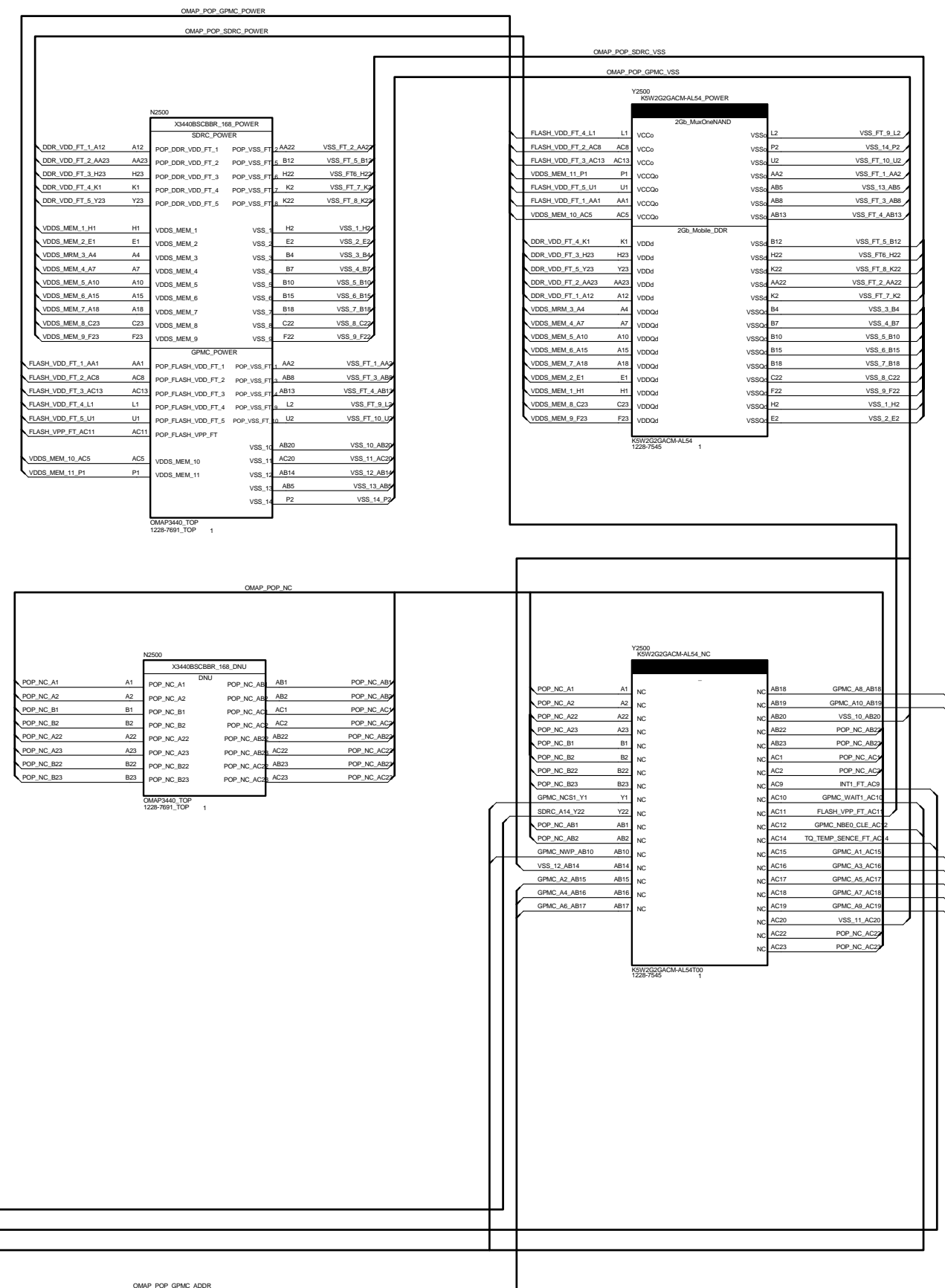
KRETSSCHEMA

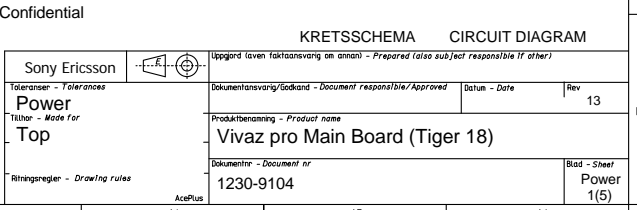
Sony Ericsson		Uppgärd (even faktureringsansvar om anmån - Prepared (also sub./not responsible if other)	
Teckenområde - <i>Partners</i> PDA Tillverkare - <i>Modell namn</i> Camera_Sensor	Dokumentnamn/Sökord - <i>Document responsible/Approved</i> Prokturhantering - Product name Vivaz pro Main Board (Tiger 18)	Status - <i>Date</i> 	13
Ritningsregeln - <i>Drawing rules</i> AcipPlus	Dokumentnr - <i>Document nr</i> 1230-9104	Bas - <i>Sheet</i> PDA 5(9)	

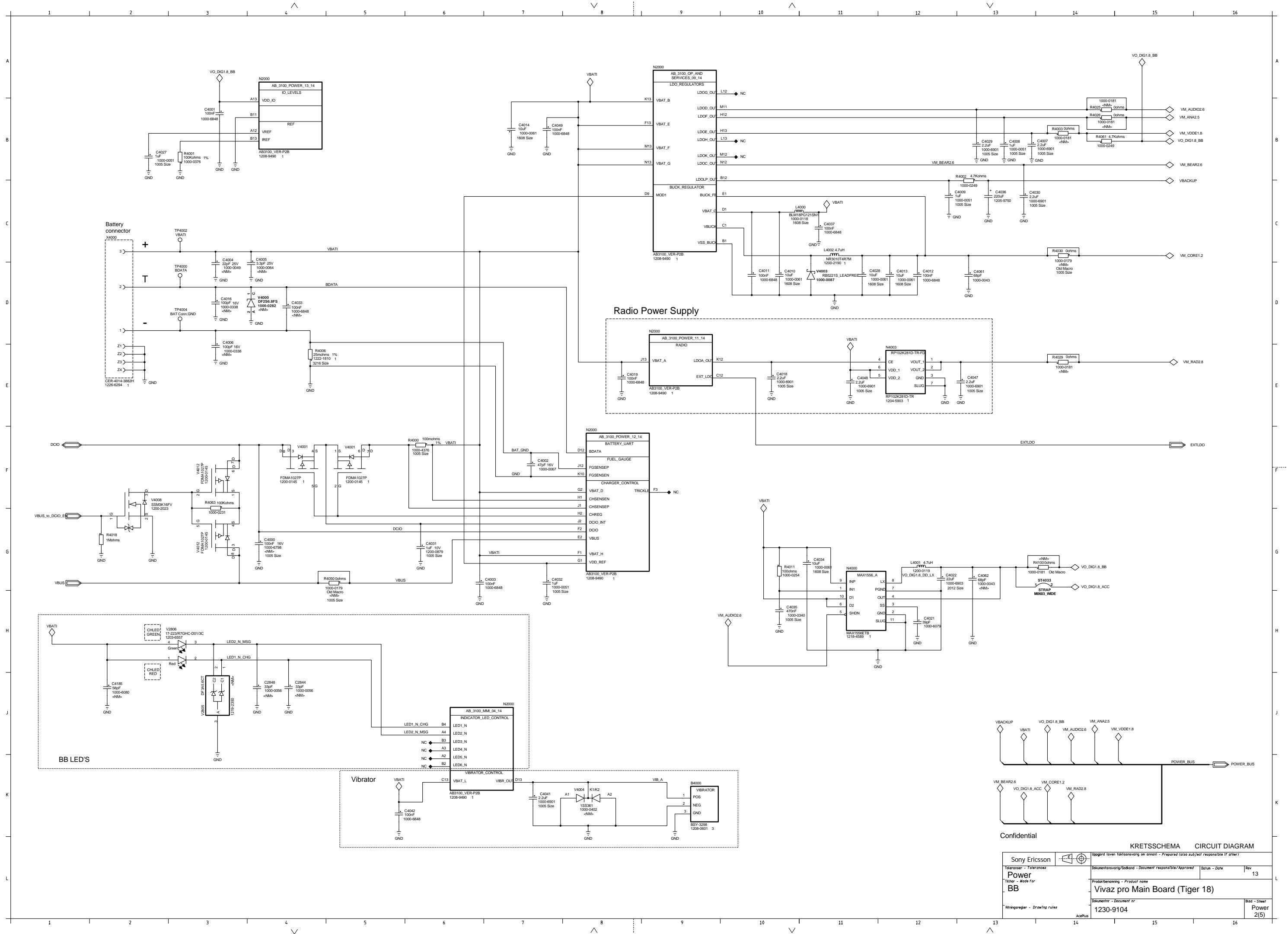




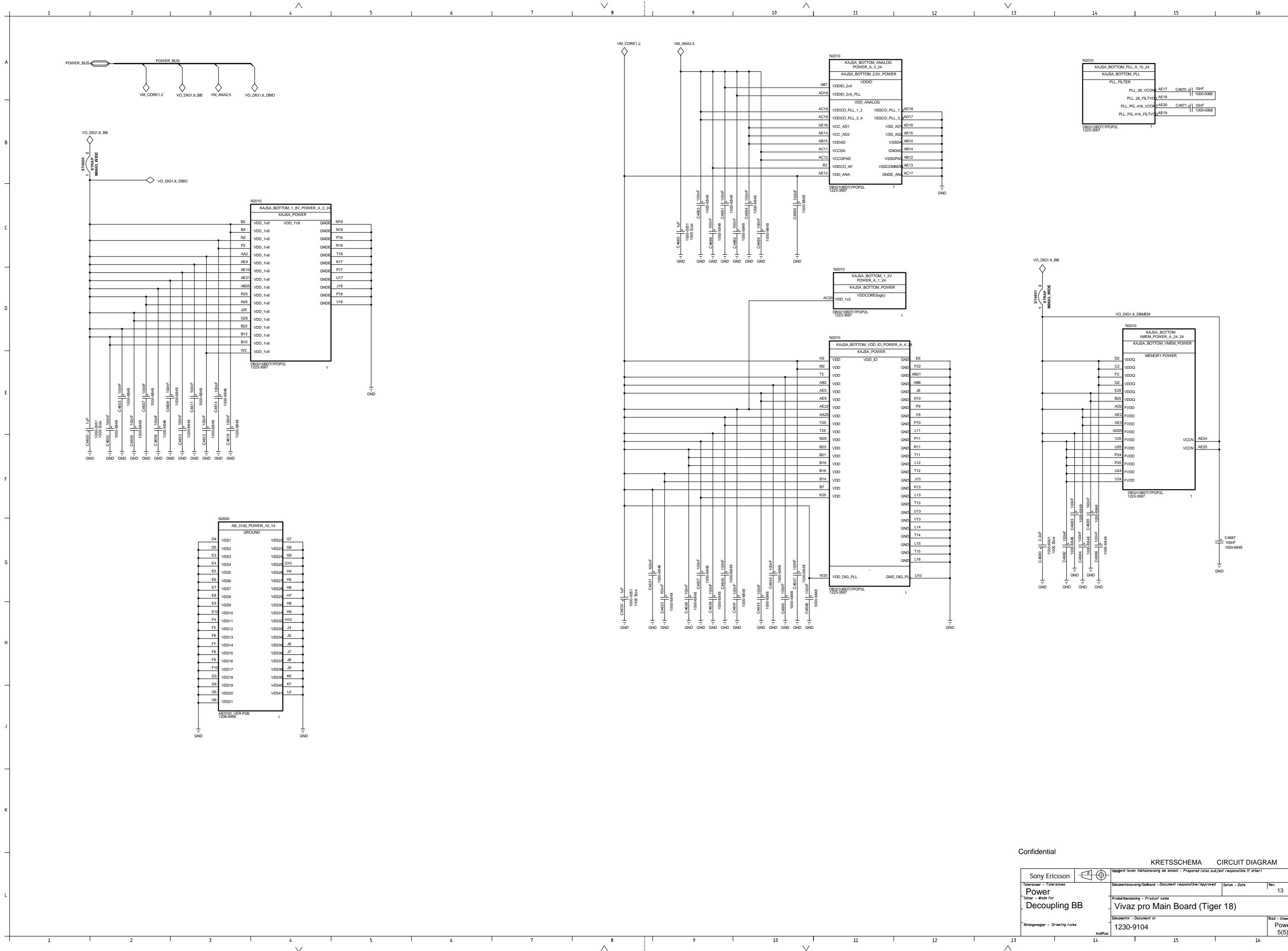














Revision History

Rev.	Date	Changes / Comments
1	2010-05-20	1 st release
2	2010-06-08	Component names searchable